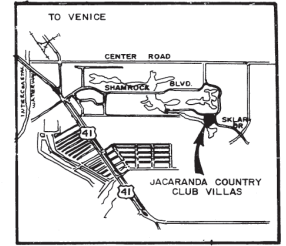
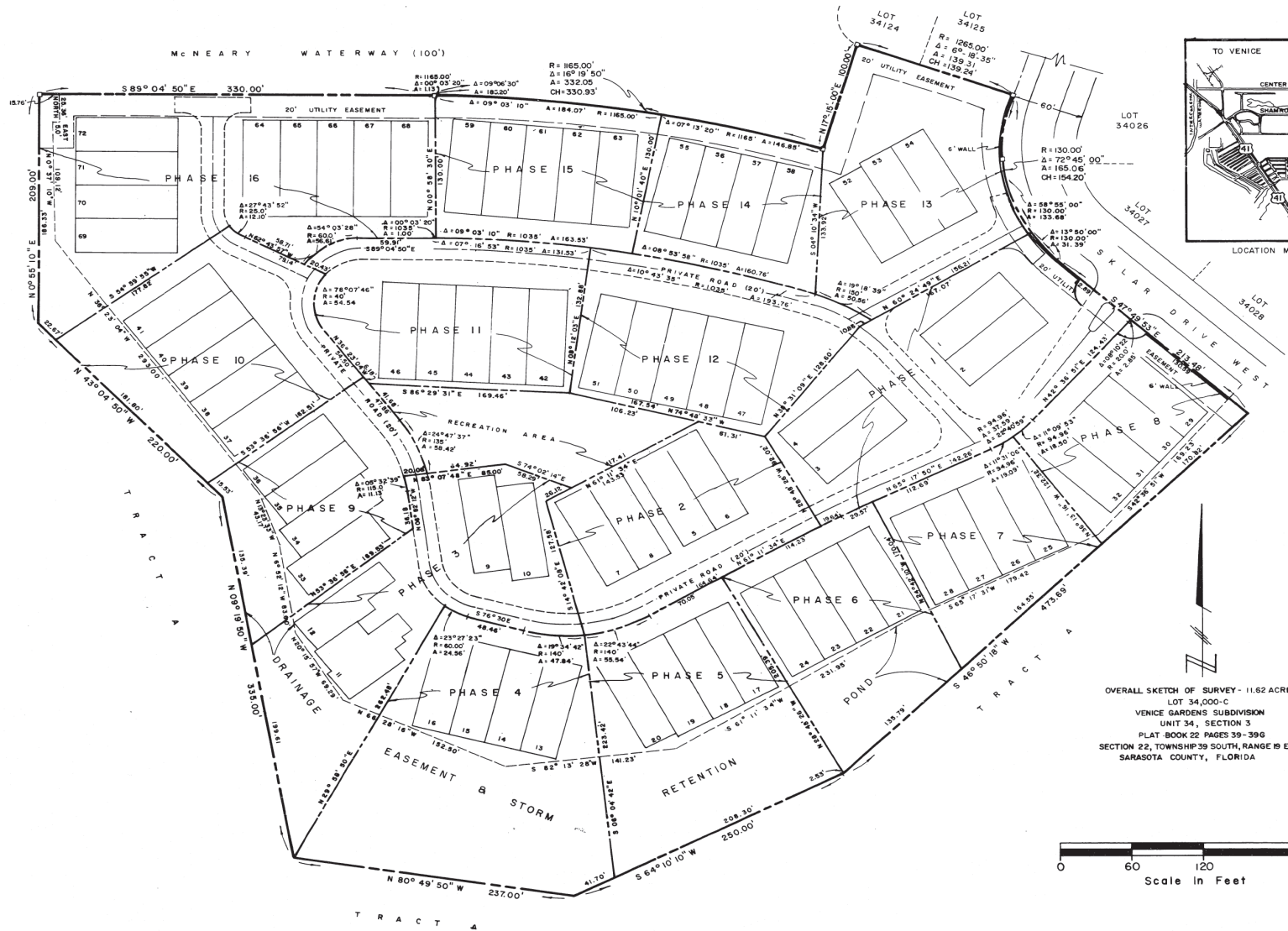


# JACARANDA COUNTRY CLUB VILLAS

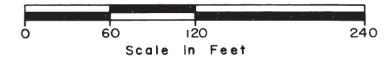
A CONDOMINIUM, SARASOTA COUNTY, FLORIDA

CONDOMINIUM BOOK 15 PAGE 40  
SHEET 1 OF 6

65960



OVERALL SKETCH OF SURVEY - 11.62 ACRES  
LOT 34,000-C  
VENICE GARDENS SUBDIVISION  
UNIT 34, SECTION 5  
PLAT BOOK 22 PAGES 39-39G  
SECTION 22, TOWNSHIP 39 SOUTH, RANGE 19 EAST  
SARASOTA COUNTY, FLORIDA



**EDWARD A. REDINGTON & ASSOCIATES, INC.**

Consulting Engineers □ Land Surveyors □ Planners  
1920 Bay Rd. — Sarasota, Florida 33579